



Hunters Hill
High School

HUNTERS HILL HIGH SCHOOL

Opera Ad Maiores – By Hard Work to Greater Things



YEAR 8 2022 STUDENT HANDBOOK

Safe, Respectful and Active Learners

INDEX

	Page
A Message from the Principal	3
General Information	4
Welcome from Year 8 Adviser	5
Pattern of Study in Year 8	5
Who's Who	6
Other People You Need to Know	7
School Psychologists	7
Wellbeing Coordinator Address	8
School Expectations	9
Promoting Active Learning	10
Behaviour Management Flow Chart	11
School Code of Conduct	12
Behaviour Expectations	13
Step System	14
Merit Award System	14
Welfare System	15
School Procedures and Policies	16 - 18
Anti-Bullying Policy	19 - 21
School Uniform Policy	22 - 23
Jewellery and Body Piercing	24
Parents and Citizens Association	24
Student Representative Council	25
Duke of Edinburgh	25
Free Bus Transport	25
Student Safety arriving and departing School.	25
School Library	26
Student Assessments	27
School Bell Times	28
School Map	29
Subject Index	30
School Evacuation Plan	43



CRICOS Provider: NSW Department of Education
Cricos Provider Code: 00588M

Welcome to Hunters Hill High School by the Principal

Hunters Hill High School is a unique school situated in what must be the most scenic site of any government school in Sydney.

It is unique not just for its geographic location, but for its connection with the natural landscapes of bushland and waterways. The school, which has a population of just under 800 students, is the perfect size in maintaining a sense of the individual while ensuring we are able to all make strong and positive connections as part of a community. This is reflected in the strong welfare ethos that runs through the school's policy and programs. Moreover, our size ensures that there are many leadership and extra-curricular opportunities catering for students with interests in the fields of both the sport and the creative arts.

Hunters Hill High School is staffed by a dedicated group of teachers who not only have passion for their subject, but an expertise that offers an innovative and exciting approach to their classrooms. Students develop creative and critical thinking skills that put them in good stead for the world. The school aims to nurture self-reliant, resilient and responsible young citizens. A fact that is reflected in the success of Hunters Hill High School alumni who have transitioned into a variety of professional fields and exciting endeavours.

Above all, Hunters Hill High School is a happy school. Students are happy to attend, learn and strive for their best whilst their teachers are happy to commit and make those efforts necessary to guide and mentor their students on their way to being quality young adults.

Mr Greg Lill
Hunters High School Principal



General Information

School Address:	Reiby Road Hunters Hill 2110
Phone Number:	9817 4565
Email Address:	huntershd-h.school@det.nsw.edu.au
Website URL:	https://huntershd-h.schools.nsw.gov.au/
DEC School Code:	8207
School Motto:	Opera Ad Maiora – By Hard Work to Greater Things
School Founded:	1958
School colours:	Navy, white.

Hunters Hill High School's motto is ***opera ad maiora***, which means '**work for higher endeavour**'. It has been displayed on the school's crest, which has adorned the school uniform since the school's foundations in 1958. 'Work for higher endeavour' is also embedded in the school's strong community spirit, its belief in social justice and its aspirations for all students to 'reach for the stars'.



Hunters Hill
High School

Welcome from the Year 8 Adviser

Welcome to the new school year. Now you are in Year 8 and the initial stress of starting school is a distant memory, you can begin the year with excitement and enthusiasm.

This book outlines requirements for all courses you do and other relevant information you may need. If you have problems and need help, you should see me your Year Adviser.

I am located in the PDPHE Staff Room and I am available to help you individually and as a group over the next twelve months. You are welcome to seek my assistance whenever you need it.

Good luck this year at Hunters Hill High.

Your Year Adviser
Mr Fausto Centurion
Languages Faculty



Pattern of Study in Year 8

In Year 8, students will be required to study:

Mandatory units

- | | |
|---------------|---------------|
| ♦ English | ♦ Visual Arts |
| ♦ Mathematics | ♦ Music |
| ♦ Science | ♦ PD/H/PE |
| ♦ History | ♦ Technology |
| ♦ Geography | |
| ♦ Languages | |

Who's Who?



Mr Lill
Principal

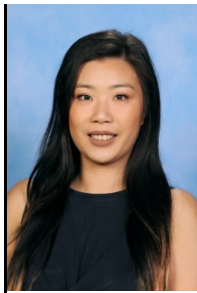


Ms O'Donnell
R/Deputy Principal
Yrs 7, 9, 11



Mr Sherwin
R/Deputy Principal
Yrs 8, 10, 12

Year 7 - 12 Adviser



Year 7
Ms Guo



Year 8
Mr Centurion



Year 9
Ms Pena



Yr 10
Mr Habbouchi



Yr 11
Ms De Santis



Yr 12
Mr Skinner

Apart from your class teachers and head teachers, there are other members of staff with whom you will be in contact. These are people who are willing to assist you in any way they are able.

Other People You Need to Know

Senior Teachers and Head Teachers (HT)

Creative & Performing Arts	Ms M Cockburn	(R/HT)
English	Ms J Brierty	(R/HT)
HSIE (History & S. Sciences)	Mr A Skinner	(R/HT)
TAS	Mr W Pickles	(HT)
PDHPE	Mr L Smith	(HT)
Mathematics	Mr B Neilsen	(HT)
Science	Ms D Sawyer	(HT)
Teaching and Learning	Ms J Austin	(R/HT)
Administration	Mr K Luk	(HT)
Wellbeing	Mrs E Patten	(A/HT)
Student Support Officer	Ms T Harvey	
Sports Organiser	Ms L Reynolds	
Careers	Ms N Polak Mr D Bastian	

School Psychologist

From time to time, we all experience difficulties or worries and, at these times, it is often helpful to discuss these difficulties with somebody. One of the people within the school you can talk to is the School Psychologist.

Referrals come from parents and teachers, or students can approach the School Psychologist directly.

There is a School Psychologist at the High School every day. The office for the School Psychologist is located on the first floor of Block K on the western side.

Parents can make appointments by ringing the school. Students can make appointments at Reception, with the Year Adviser, or directly with the School Psychologist.

Head Teacher Wellbeing Address

Students achieve greater results (socially, emotionally and academically) if they feel *known, valued* and *cared for*. Wellbeing, or the lack of it, can affect a student's engagement and success in learning. Developing a strong sense of belonging has the potential to bring about positive changes.

At Hunters Hill High School, our U Matter Welfare program is designed to help build students' capacity to cope with challenges, resolve issues respectfully and to develop a strong culture of learning. By encouraging our students to be positive Upstanders, rather than Bystanders, we are developing a community of tolerant, kind and empathic young people.

Our students will be expected to contribute to their own wellbeing, the wellbeing of their peers and the collective wellbeing of the School. In this way our School, in partnership with parents and carers, will equip our students to be active and positive contributors to the society in which they live.

Our students are encouraged to build strong rapport with their U Matter Mentor teachers and to positively participate in the interactive sessions. These relationships are characterised by constructive interactions that provide enthusiastic and genuine support. They are important because they help build social and emotional skills and in turn, nurture other positive, caring and respectful relationships.

In addition to the support of the U Matter Mentor teachers, our Student Support Officer can help students reflect on their wellbeing needs, and develop the ability to set and achieve goals for the future. Our Student Support Officer can offer mediation strategies and help connect families with external support agencies.

Hunters Hill High School has also embedded a positive behaviour merit system where students are recognised for their outstanding academic, interpersonal and intrapersonal successes. Merit awards accumulate and students are presented with Bronze, Silver and Gold Awards to recognise personal achievement.

So what can you do at home to support your child?

Please take some time to discuss with your child how they are managing exam stress, time management issues or negotiating friendships. Help your child develop strategies that show strength in situations of peer pressure, manage conflict with peers, and better cope when upset or disappointed. You may like to help your child design a study timetable or allocate regular periods of time in the day that are reflective and devoid of technology.

With your help, we want our students to recognise that there are people who are willing to support them in feeling *known, valued* and *cared for*.



Edwina Patten
Acting Head Teacher Wellbeing

School Expectations Hunters Hill High School

Hunters Hill High School provides a safe, secure environment based on respect, trust and support. Students should make the most of the opportunities provided to maximise their learning. If students follow the school rules quality teaching and learning remains the focus at Hunters Hill High School.

*Our Community at Hunters Hill High School take pride in being: **safe, respectful, active learners.***

The key words must be 'Safe, Respectful', and 'Active Learning'. They go hand in hand and impact on both social and academic maturity and progress.

To be successful as a student you will need to be ...

SAFE

- Get up on time, dress yourself, arrange your breakfast, get to school on time
- Perhaps pack your own lunch
- Arrange own social activities with friends
- Initiate contact with teachers regarding any difficulties at school
- Take responsibility for your own behaviour, especially in classroom situations
- Be confident to express your own ideas

RESPECTFUL

- Being polite, courteous and well - mannered when dealing with other people
- Putting your hand up to answer questions and waiting your turn to speak
- Looking after furniture and equipment
- Leaving others' belongings alone
- Using appropriate language

ACTIVE LEARNERS

- Pack your bag with all necessary equipment for the school day
- Record all homework each day in your diary
- Manage completion of homework on time –you may need advance planning for assignments or tests
- Maintain equipment necessary for school activities – diaries, working pens, calculators, pencils, ruler as well as sport equipment
- Keep your home study area ready for work

Areas to think about....

- Focus on your strengths.
- Try and complete homework and assignments on your own.
- Find a suitable area for homework (not the kitchen table/bench).
- Be responsible for your own equipment, books etc.
- Try and do your own research for homework assignments.
- Try and develop or find a study method that works for you.

Hunters Hill High School Promoting Active Learning

- ♦ Bullying other / Dangerous behaviour
- ♦ Abusing a staff member or visitor to school
- ♦ Abusing other students
- ♦ Being physically aggressive
- ♦ Being violent or out of control
- ♦ Leaving the room without permission
- ♦ Openly defying teachers and other staff
- ♦ Receiving a 3rd warning
- ♦ Serious breach or repeated breach of laptop usage contract
- ♦ Any behaviour that seriously undermines learning or our school values
- ♦ Being late or unprepared for class

ABOVE THE LINE behaviour

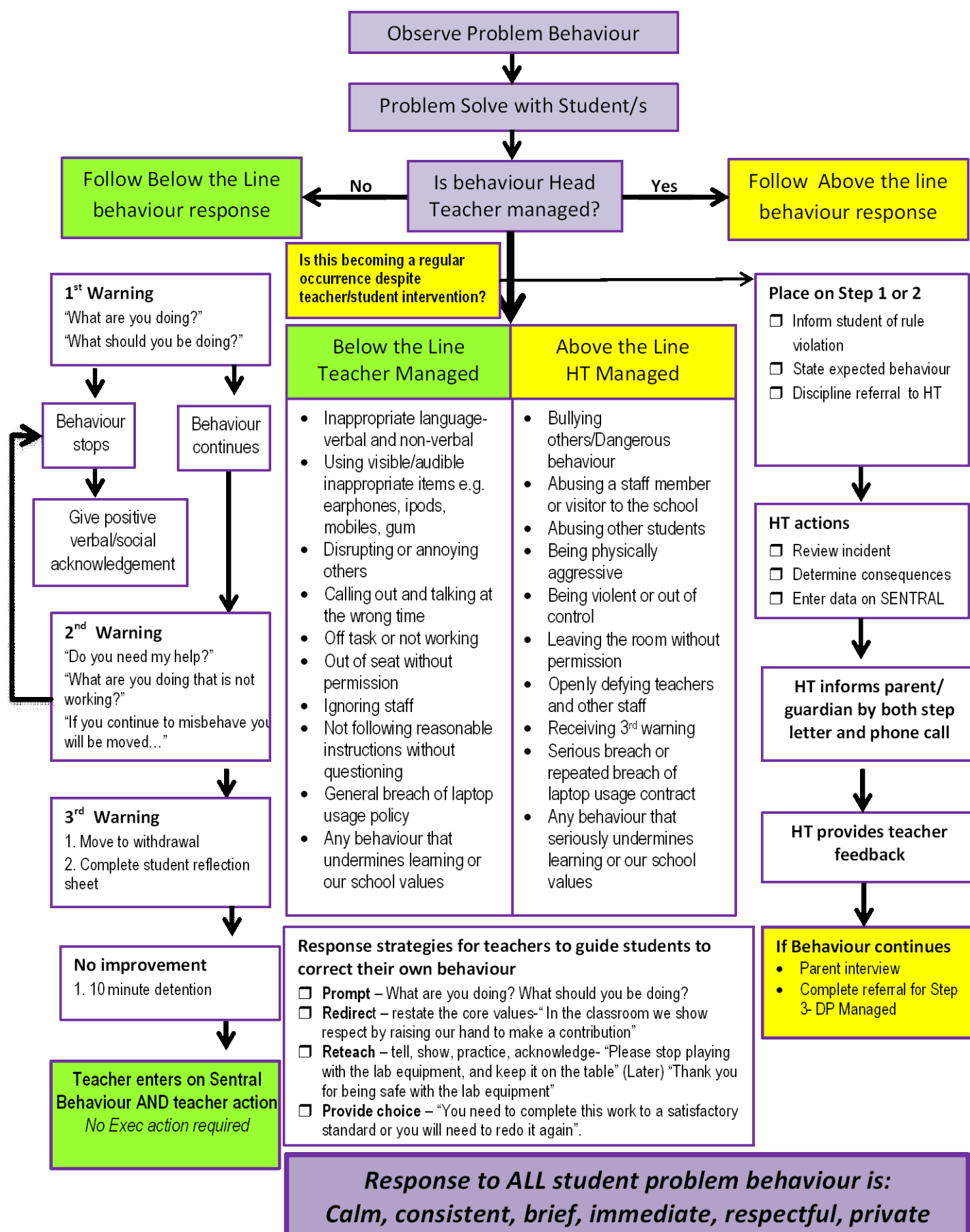
**= IMMEDIATE TIME OUT
or REMOVAL and REFERRAL**

-
- ♦ Using inappropriate language – verbal and non-verbal
 - ♦ Using visible/audible inappropriate items e.g. earphones, ipods, mobiles, gum
 - ♦ Disrupting or annoying others
 - ♦ Calling out and talking at the wrong time
 - ♦ Off task or not workin
 - ♦ Out of seat without permission
 - ♦ Ignoring staff
 - ♦ Not following reasonable instructions without questioning
 - ♦ Name calling or annoying others
 - ♦ General breach of laptop usage policy
 - ♦ Any behaviour that undermines learning or our school values

BELOW THE LINE behaviour

**= 1st or 2nd WARNING
or other CONSEQUENCES**

Behaviour Management Flowchart for every new lesson
This goes in-conjunction with the HHHS step discipline system



Our School's Code of Conduct

(DRAWN UP BY THE STUDENT BODY)

1. ***To Strive for Excellence and the Best Possible Education***
I will need to discipline myself to attend all my classes to learn all I can, to co-operate with the teachers and to participate in the activities of the school.
2. ***To Strive for a Safe and Hygienic Environment***
I will need to act in a safe and sensible way that will not endanger me and/or others: including not smoking, drinking alcohol or taking drugs. I will also need to maintain a high standard of personal hygiene and help to keep the school clean and beautiful at all times.
3. ***To Always Respect other People and their Rights***
I will need to be considerate and supportive of others and respect their right to learn. Bullying, teasing, abusive behaviour and interfering with other people's property have no place in our school.
4. ***To Respect our School***
I will need to help keep the classrooms, furniture and grounds of the school in good order. Damaging school property and defacing text books have no place in our school.

Students are expected to be Safe, Respectful and Active Learners

Student's Rights and Responsibilities

Rights

Every student has the following rights:

To learn

To be heard

To be respected

To be safe

To have a hygienic environment

Responsibilities

So that students' rights are possible, every student has the following responsibilities:

To do his/her best and to allow others to learn

To allow others to be heard

To respect other people and their property

To allow everyone to feel safe

To maintain the school environment and its hygiene

Hunters Hill High School Behaviour Expectations

Our community at HHHS takes PRIDE in being:	Everywhere	Classroom	Playground	Canteen	Corridors & stairs	Toilets	Sport & excursions
Safe (for ourselves and others)	Be on time Act responsibly Wear the correct uniform Follow the rules on the use of electronic devices	Bring the correct equipment including diary, books, and stationery Sit in assigned seat Keep visible/audible items eg earphones, iPods, mobiles and gum in bag	Follow teacher instructions Stay in supervised areas Play and act responsibly	Line up quickly Avoid blocking exits	Report incidents Line up quickly and sensibly outside your room No phone calls or videos or taking photos	Go to the toilet during breaks Report mess and/or graffiti) No phone calls, videos or taking photos	Be prompt with payments Show good sportsmanship No phone calls, videos or taking photos
Respectful (to ourselves, others and their property)	Be considerate of staff and other students Follow instructions from staff Use polite and appropriate language Treat other students and staff the way you would want to be treated	Allow others to learn Speak at the right time Use your device only when instructed	Keep the area clean Use manners and speak calmly	Keep the area clean Only buy for yourself Use your manners	No yelling, screaming or public displays of affection Walk quietly and sensibly to class Keep your hands to yourself and respect others personal space	Keep the toilet area clean and graffiti free	Behave appropriately in public and on public transport Follow the rules of the venue
Active learners (in all aspects of school life)	Work to achieve your best Make good choices and learn from your mistakes	Listen attentively to teacher and peers Attempt all work Have a positive attitude	Play fair and by the rules Move to class on the warning bell	Make good nutritional choices Listen to the teacher on Duty	Know where your rooms are Greet teachers and visitors in a polite and friendly manner	Be hygienic and wash your hands	Make a genuine effort to participate Participate to the best of your ability

School's Discipline System

Hunters Hill High School has a 'Step System' which has a number of sequential levels to offer a moderated response to disciplinary issues.

Prior to any use of the 'Step System', teachers would use their normal repertoire of disciplinary strategies, including, but not limited to:

- Positive encouragement
- Rewarding constructive behaviours
- Appropriate warnings of breaches of the school's Code of Conduct
- Counselling by the teacher
- Other imposed consequences
- Moving students within the classroom
- Isolating the student within another teacher's class

Step 1 involves the classroom teacher counselling the student and making contact with the family.

Step 2 is managed by the relevant Head Teacher and involves student counselling and contact with the family.

Step 3 is managed by the Deputy Principal and involves student counselling and contact with the family.

The school has a range of monitoring books to assist students with improving their behaviour. The monitoring responsibility for these books is shared between the school and the parents on a day-by-day check of each lesson.

- Yellow Book – monitors attendance only- At school, this is supervised by the Head Teacher Teaching and Learning.
- Green Book – monitors all subjects (frequently at the student's or a parent's request) – At school, it is checked daily by the Year Adviser.
- Blue Book – monitors all subjects (usually after moderate misbehaviour) – At school, it is checked daily by the Deputy Principal.
- Red Book – monitors all subjects (usually after suspension or serious misbehaviour) – At school, it is checked daily by the Deputy Principal.

The most extreme behaviours including theft, violence, aggressive behaviour and continued disobedience may invoke the use of DoE guidelines for suspension and expulsion.

School's Merit System

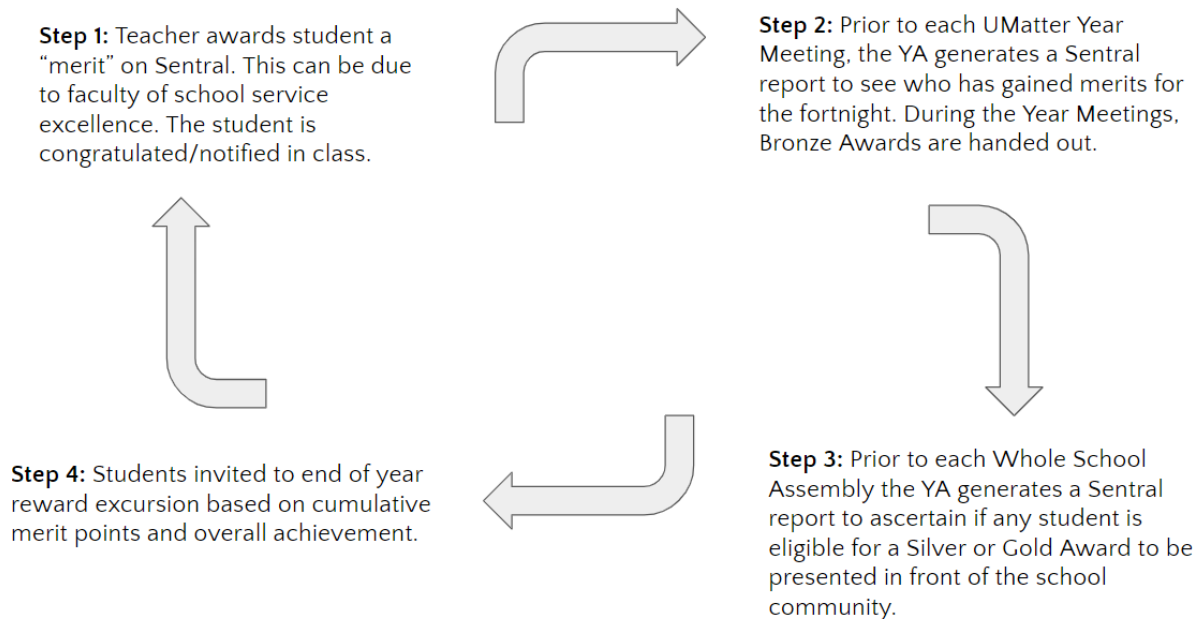
Hunters Hill High School has a reward system whereby students can be rewarded for exceptional work, contributions to school service and sustained effort. Any worthwhile school endeavour can be acknowledged in this way. Students are awarded positive Merits via Sentral which accumulate towards Bronze, Silver or Gold Certificates. These are then presented to students at Year Meetings and Whole School Assemblies.

The Merit Certificates

- 1 Merit: Issued by teachers for school service and extracurricular participation
- 20 Merits: Bronze Award Certificate issued at Year Meeting by YA. Head Teachers can also give a Bronze Award for Faculty excellence.
- 50 Merits: Silver Award Certificate issued at Whole School Assembly
- 100 Merits: Gold Award Certificate issued at Whole School Assembly

The Merit and Discipline Systems dovetail together to form the major components of the school's Welfare System.

The Process



School's Welfare System

Hunters Hill High School endeavours to offer support for its students and to cater for the well-being of these students. A team of teachers known as the Learning Support Team lead the staff in meeting the welfare needs of our students. This team meets weekly to address student support issues. Members of this team include:

Year 7 Adviser	Ms Guo
Year 8 Adviser	Mr Centurion
Year 9 Adviser	Ms Pena
Year 10 Adviser	Mr Habbouchi
Year 11 Adviser	Ms De Santis
Year 12 Adviser	Mr Skinner
School Psychologists	Ms B Hanson,
A/HT Wellbeing	Mrs Patten
Student Support Officer	Ms Harvey
Learning Assistance and Support Teacher	Ms De Santis
R/HT Teaching and Learning	Ms Austin
HT Administration	Mr Luk
Deputy Principals	Ms A O'Donnell (Relieving) Mr Sherwin (Relieving)

The school works to enhance student resilience through a range of programs and strategies run through our U-Matter mentoring program or additional activities including: **Reward Excursions, Duke of Edinburgh Award Scheme, Peer Support, Peer Support Leader Training, Recognition Assemblies, Morning Teas, Student Representative Council, Year 6 Orientation Program and Variety Night Talent Program.**

The monitoring book program allows the partnership between school and home to assist students to obtain regular and ongoing feedback on meeting course and behavioural requirements. This program has assisted many students in modifying their behaviours to improve classroom performance.

Our School Psychologists are available to students through self-referral, teacher and parent referral to provide assistance with issues that arise from 'time to time' during adolescence.

Hunters Hill High School has a clear anti-bullying policy. Students have the right to work and learn in an environment that is free from harassment. A range of strategies including mediation, family intervention, teacher intervention and disciplinary measures are used to address bullying. Parents who wish to raise a welfare concern or issue with the school should make contact with the relevant Year Adviser for your son or daughter.

School Procedures and Policies

1. Student Attendance at School

Regular attendance at school is essential if students are to maximise their potential and achieve course outcomes. Regular attendance and engagement in educational programs is strongly linked to the likelihood of students experiencing success in learning. Students who exhibit poor patterns of attendance are at risk of not achieving their potential and are disadvantaged in the quality of choices they are able to make in later life. Schools, in partnership with parents, are responsible for promoting the regular attendance of students. While parents are legally responsible for the regular attendance of their children, school staff monitor part or whole day absences as a part of their duty of care.

a. Daily Absence

Student absences should be explained within seven days of an occurrence of absence. Parents can explain these via the following means:

- Calling the school's attendance office at any time Ph: (02) 9817 4565. If leaving a voicemail please clearly state your child's name, Year and reason for their absence
- Replying to the email sent by the school
- Writing and signing a note that the student can hand in at student reception (if they are absent for a day or two)
- Providing a doctors certificate

Reasons for absences such as the following **may not be justified**:

- Shopping
- Sleeping in
- Working around the house
- Caring for younger siblings and other children
- Minor family events such as birthdays
- Hair cuts

Parents are required to contact the Year Adviser/Head Teacher Teaching and Learning if ongoing attendance issues occur. If it is a prolonged illness then medical certificates are required.

b. Exemption from Attendance at School (refer Guidelines for Leave p 29)

Principals, Directors, Public School and Executive Directors (School) may grant exemption due to:

- Exceptional circumstances (including the health of the students where sick leave or alternative enrolment is not appropriate)
- The child being prevented from attending school because of a direction under the Public Health Act 2010. (The parent is not required to complete an application for exemption)
- Employment in the entertainment industry - refer to children's employment
- Participation in elite arts or sporting events

c. Overseas and Interstate Travel

The following procedures need to be adopted if students are thinking about taking an overseas or interstate trip with their family. We encourage families to travel during school holidays. Any student who is taking leave needs to give the school notice and completing a Certificate of Extended Leave - Travel form. The Principal can approve up to 100 days leave. More than 100 days leave requires the approval of the Director.

A two or three month trip would mean that the student will not have the right number of school time hours, and therefore the Principal will not be able to sign the form that says he/she has satisfactorily met the course requirements. In such a case the student may need to repeat the year of courses involved. To be given consideration for satisfactorily meeting course requirements a student returning from leave would need to demonstrate that they have caught up on all missed course work including class notes, course summaries and assessment tasks and worked toward achieving the outcomes of all courses.

d. Procedure for leave application

- Email the school to obtain a copy of the Application for Extended Leave - Travel
- Have the form completed by your parents and returned to the Principal;
- Attach a copy of the itinerary or airline tickets; and
- You may need to make an appointment to discuss your proposed absence from school with the Principal.

Please note that approved leave is no longer classified as an exemption.

2. Lateness and Early Leavers

Students are expected to be at school prior to 8.45am. This ensures that students don't miss out on the important learning activities scheduled early in the day when students are most alert, helps students learn the importance of punctuality and routine, and gives students time to greet their friends before class.

The Department of Education requests that a reasonable explanation be provided for lateness. Students who arrive late without a justifiable reason will have a consequence imposed such as a detention or play-ground clean-up (depending on the frequency of lateness). Their late arrival is recorded on the official roll and on the student's school report. If lateness is persistent, parents will be contacted by the HT Teaching and Learning to discuss the reasons and develop a plan to improve attendance.

Under no circumstances will pupils leave the premises during school hours without the permission of the Principal or Deputy Principal. An 'Early Leavers' pass will be issued in response to a written request from a parent. Students not carrying this pass will be redirected back to school by authorities if caught. The note giving an adequate reason is to be presented to a Deputy Principal, a minimum of 24 hours prior to the requested leave time. Only in exceptional/emergency situations will notes for Early Leave be processed on the day. Parents are advised to make appointments for their son or daughter out-side of school hours where possible.

3. Injury and Illness at School

It is essential that parents inform the school if contact or emergency telephone numbers change. If an accident/injury or illness occurs at school we will: render basic first aid, and contact parents.

In the case of an accident which requires urgent medical attention, we will call an ambulance. The school does not have sufficient staff to supervise students in Sick Bay for lengthy periods of time. If a student is too ill to return to class, parents will be contacted and arrangements made for the student to be collected from school. One period in length is the maximum time permitted in Sick Bay.

4. Detention

Detention sessions are held during lunchtime or after school. At these sessions, pupils go to selected classrooms to be supervised by teachers as a consequence for such things as disturbing the progress of a lesson or breaking school rules. For more serious offences students are detained after school on a Wednesday for forty minutes, 2.20pm-3.00pm.

5. Mobile Phone Policy

Students are encouraged to leave mobile phones in their school bag whilst on school premises between 8.45am and 3.10pm.

Mobile phones may be confiscated by staff for being out of their bag or "on" in their bag. A repeat breach of this policy may lead to disciplinary action. The use of a camera and transmission of photographs is a breach of the privacy laws.

6. Movement About School

Pupils are to move in an orderly manner and keep to the left side of corridors and stairway when moving about the school or when lining up for classes.

7. Office Duty

Office Duty by students has been a feature of life at Hunters Hill High School for many years. Throughout the year students from Years 7 and 8 are selected in turn from the roll to perform this duty.

The purpose of Office Duty is multi-faceted. First and foremost it is a community service for the entire school community. Hunters Hill High School is a large school and the school does not have an intercom system. Many students will be called to the school offices throughout the day to take messages from their families, see the Principal, DPs, Counsellor or other school personnel. The vital function the office duty students perform enables a timely response. Performing the duty helps develop and refine skills of time management, understanding and following directions and interpersonal skills. Students

get to understand the structure of the school better and come into contact with a wide variety of teachers, Head Teachers and support staff. The students receive praise and encouragement for doing the duty and many students report that they thoroughly enjoy the responsibility that comes with their day of office duty. The P & C support the practice of office duty, however if any parent wishes that their child not complete office duty please contact student reception and their child's name will be removed from the office duty roll.

8. Out of Bounds Areas

Certain areas in the school grounds are out of bounds. These include car parks and all areas indicated in the out of bounds map. In the afternoon, students waiting for buses must wait in the assembly area until their bus has been called by the teacher on duty, to ensure their safety.

9. Presence in Classrooms

No pupil is to be in classrooms before or after school or during recesses. These areas are out of bounds at these times and at lunch without the permission of a staff member.

10. School Canteen

Lunches may be purchased from the school canteen by order (before school only), or at recess and lunch. Pupils will not be given permission to leave the school grounds to purchase lunches, or to go home during lunchtime. Students are not permitted to organise the delivery of fast foods such as pizza to the school as this breaks the Healthy School Canteen Policy.

11. Sport

The aim of the sports program is to teach the basic rules, techniques and skills of different sporting activities for students to be able to partake in active interests during their leisure time.

Tuesday afternoon sport is compulsory for all students in Years 7-11. Students have the opportunity to choose a Grade or House/Recreational sport. Grade teams play against other schools in our zone on a weekly basis. Sports include: cricket, basketball, touch, tennis, softball, baseball, netball, water polo, volleyball, soccer and hockey. House/Recreational activities include: gym, basketball, yoga, soccer, touch, tennis, and volleyball,

Talented students have the opportunity to represent the school at Zone, Regional or State levels. We have a commitment to our zone to participate in swimming, cross country and athletic carnivals and have a very proud and successful record. We have consistently been a high performing school in the region in all of these sporting activities.

All students must wear the PE/Sport uniform which can only be purchased at the school uniform shop. Students unable to participate in sport will assist staff in scoring or other ways at sport. Appointments should not be made on a Tuesday afternoon as it is a mandatory part of the curriculum. If they are, an appointment card must accompany a note requesting permission to leave early the day before sport.

Students without proper sports uniform (including sports shoes) will be sent to a room for the sports afternoon and be detained until 3.00pm. Disobedient or unruly students will be detained till 3.00pm.

Many students go by bus to sporting venues. Despite our best organisation, buses are sometimes late in bringing the students back to school. All students should have an emergency plan in case they miss their bus home. Students and parents should discuss the procedure.

12. Staff Rooms

These are out of bounds at all times to students. If you wish to see a teacher, knock and wait for a teacher to answer.

13. Textbooks

Textbooks may be issued by some faculties in the school. These texts will be provided to the students in good condition and are expected to be returned in the same condition.

14. Travelling to and from School

Pupils are subject to school rules when travelling to and from school. Whether walking or travelling by public transport, they are expected to obey all safety rules, and to conduct themselves in such a way as to bring credit to themselves, their parents, and the school.

HUNTERS HILL HIGH SCHOOL

BULLYING AND HARASSMENT POLICY

Rationale

All schools in NSW are committed to taking action to protect students from bullying and to respond appropriately when bullying does occur. At Hunters Hill High School, all students and staff have the right to learn and work in a safe and secure environment. No student, employee, parent, caregiver or community member should experience bullying within the learning or working environments. Bullying can be illegal if it involves behaviours that include physical violence, threats of violence, damaging property or stalking. At Hunters Hill High School we believe that:

- Our school community serves to support an environment where it is not acceptable to bully or harass.
- Our school community supports a culture that says it is OK to report incidents of bullying and harassment. In such an environment, the cycle of silence about bullying can be broken.
- Our school community recognises that the student, parents, school staff and community members can tackle bullying and harassment in a consistent manner. Appropriate structures, policies and practices are in place to deal with day-to-day incidents of bullying and harassment.
- Each person has the right to be valued for his/her individuality, to be cared for, trusted and encouraged to express him/herself in a supportive school environment.

School community beliefs about bullying

It is important that students, staff and parents/carers have a shared understanding of what bullying is, how it impacts on people and how bullying is responded to at Hunters Hill High School. Bullying has three main features:

- it involves a misuse of power in a relationship
- is ongoing and repeated, and
- involves behaviours that can cause harm.

Bullying can happen in person or online, and it can be obvious (overt) or hidden (covert). Bullying behaviour might include;

- Direct physical threats or assaults
- Unwanted sexual attention
- Social exclusion of one by another or a group
- Verbal insults or spreading rumours
- Sending of threatening or demeaning messages by SMS, Email, Internet, Social Media
- Non-verbal signals
- Graffiti or offensive clothing

Some behaviours, while not bullying, are conflicts that still need to be addressed and resolved. Examples include:

- mutual arguments and disagreements (where there is no power imbalance)
- not liking someone or a single act of social rejection
- one-off acts of meanness or spite
- isolated incidents of aggression, intimidation or violence.

Reporting Incidents and Responses to bullying

At Hunters Hill High School bullying in all its forms is not accepted and all members of Hunters Hill High School accept their responsibility to promote positive relationships and to prevent bullying.

Reports of bullying will be investigated and acted upon. Responses to bullying might include support for targets of bullying and perpetrators and/or disciplinary measures.

The teacher will intervene to stop the bullying. The teacher may conduct and complete a mediation contract or refer the situation to a Year Adviser or Deputy Principal if serious.

A Year Adviser may employ one of the following intervention strategies:

- Traditional disciplinary approach
- Mediation
- Restorative practice
- Support group method

Serious and repeated incidents

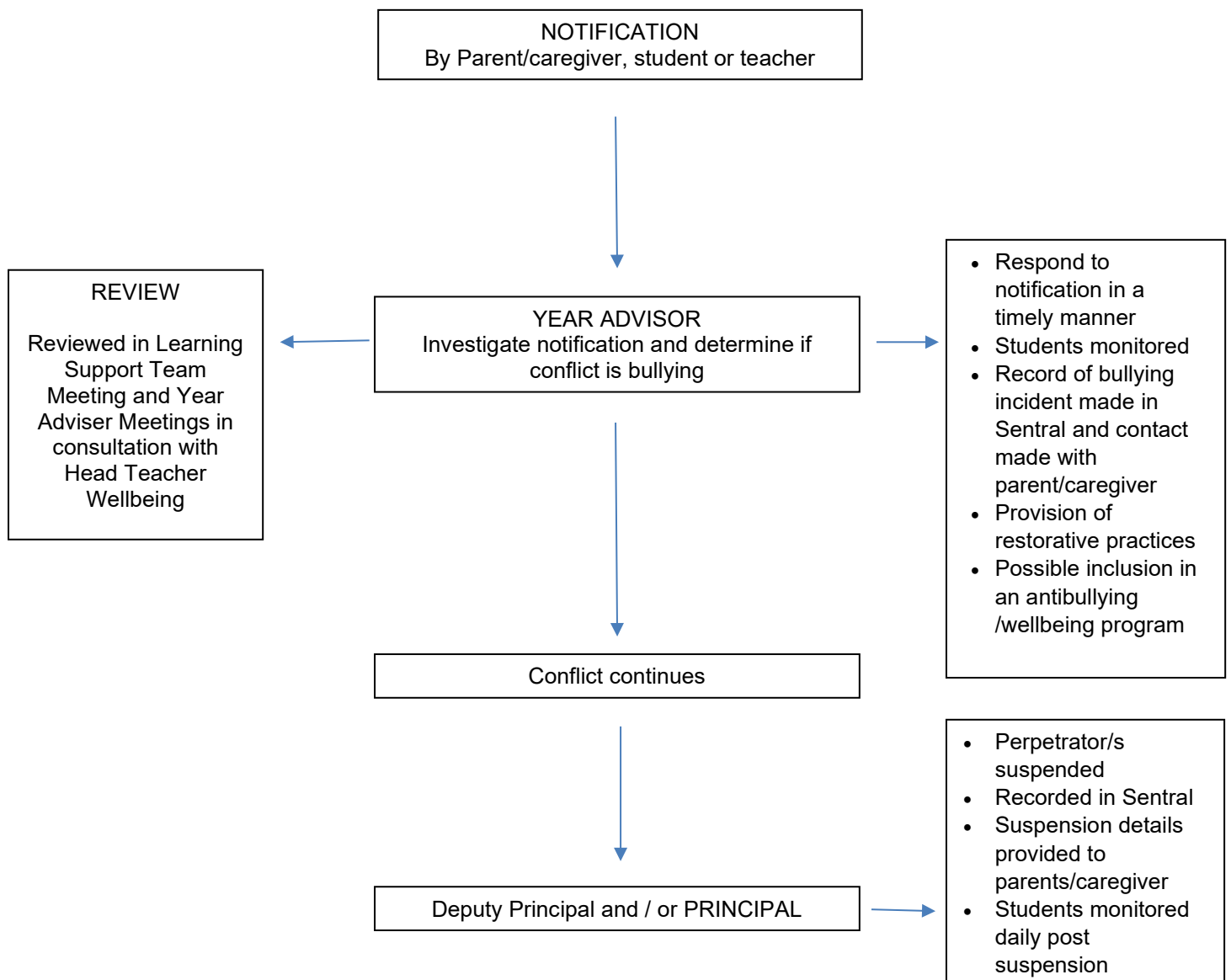
Not all cases of bullying will be easy to deal with but these cases will be dealt with through providing support for victims and their families, and consequences for bullies.

In serious cases, mediation between parties will be encouraged and the unacceptability of the deed (not doer) will be emphasised. The effect the deed has had on all parties involved will be explored. Our aim at this stage is to help the perpetrator see that a change in behaviour is required, that the victim feels supported and that the problem is solved with arrangements for restitution to be made.

Response

MANAGING STUDENT CONFLICT

The following flowchart represents the plan of action the school community will undertake to combat bullying. Not all disagreements or conflict are bullying, therefore it is important to review suspected incidents to determine the nature of the conflict. If bullying has occurred, the school community is committed to resolving the incident positively through initiatives and strategies that promote positive student relationships and discourage bullying behaviours.



Prevention Programs

Effective social skills and positive relationships act to prevent bullying. At Hunters Hill High School we promote effective social skills and positive relationships through:

- Year Advisers who Case Manager for students with difficulties in their year levels. Year Advisers often become among the first people to hear about any bullying behaviour and will take appropriate action including regular contact with parents.
- U Matter mentoring sessions with a Teacher Mentor to develop resilience, conflict resolution and reflective skills.
- Student Leadership Team
- Alternative Programs that emphasise tolerance and respect such as Top Blokes, Raise Mentoring, Ready, Set, Sail and Creating Chances
- Extra-Curricular programs to support and challenge students and to provide them with opportunities to develop new and important life skills

The Bullying Incident Package involves a series of confidential interviews based on an intervention strategy devised by Professor Anatol Pikas called the Method of Shared Concern. Basically, it is a method of dealing with bullies that avoids an accusatory approach. It deals with bullies as individuals and aims to move the bully towards behaving responsibly as an individual.

The method aims not only at helping victims but also aims at changing attitudes of children who join in group bullying. If the group members are re-individualised, as Pikas suggests, they will begin to act responsibly and change is more likely to be lasting, not merely maintained by surveillance.

School Uniform

Students at Hunters Hill High School are expected to wear the school uniform correctly at all times while in school, travelling to and from school and while representing the school. As part of Workplace Health and Safety legislation it is a requirement for all students on site to wear appropriate protective footwear in areas such as Science labs, workshops, kitchens and other areas. It is expected in PDHPE (Personal Development, Health and Physical Education) that students will bring and change into their school sport uniform including suitable sport shoes. The HHHS Sport Uniform is to be worn each Tuesday for sport. Team uniforms for specific sports such as soccer, rugby, basketball, may be worn when required. These team uniforms are supplied on a loan arrangement by the school.

Specific details of our uniform are available on our website at <https://huntershd-h.schools.nsw.gov.au/about-our-school/what-we-offer/uniform.html>

THE ADVANTAGES OF A SCHOOL UNIFORM

A school uniform:

- Creates a Sense of belonging and community and encourages students to take pride in their school.
- Reinforces an Academic Setting and studies have shown that this can have a positive impact on students' academic results.
- Promotes equality by reducing status symbol issues.
- Can save parents money as students do not have to provide a multitude of different clothes so their children have a different outfit each day.
- Can save students time in the morning as they do not have to decide what to wear.
- Provides appropriate attire so that students are ready to participate in all school activities.
- Is preparation for formal and corporate attire in the workplace.
- Is also important as our school is judged by the community on our uniform standards.

UNIFORM INFRINGEMENT CONSEQUENCES

Hunters Hill High School is a proud uniform school and we follow a procedure and policy designed to improve the wearing of our uniform. Parents have overwhelmingly supported the implementation of a strong uniform at the school and we appreciate their support. At the beginning of every lesson, teachers note down any students out of uniform when they mark their roll. These students are then referred to the Uniform Officer who will follow up with any students out of uniform. Students who are not in full school uniform need to bring a valid note from their parents stating the reason they are not in full uniform. Students in the wrong clothing will be given an alternate uniform for the day to ensure that they meet the school's uniform requirements. The school appreciates the support of parents in ensuring the high expectations for uniform that we have are met.

Junior school years 7-9 (All items are available from the Uniform Shop)

Uniform Short sleeved, sky blue shirt with school crest.
Navy shorts, navy long pants or navy pleated skirt

Senior school years 10-12 (All items are available from the Uniform Shop)

Uniform White shirt or blouse with school crest
Navy shorts, navy long pants or navy pleated skirt

Other school approved clothing Years 7-12

- Soft shell school jacket and/or Acrylic school jumper
- Navy tie with school crest
- Plain navy cap (school cap available from Uniform Shop)
- Plain black or navy stockings/tights (to be worn under skirt or shorts)
- Plain Black leather shoes with black laces
- HHHS Scarf and HHHS Beanie
- Appropriate school backpacks are required. Handbags are not acceptable.

Sport Uniform: Polo shirt with school colours and school crest.
Navy school sports shorts or HHHS Trackpants

UNIFORM UPDATE

The P&C is scheduling a gradual introduction of new uniform items in 2021. Please remember, there is no obligation to purchase new items or to replace old styles for new styles. You can wear your uniform items until they need replacing. The new items will become available in a staggered delivery, which minimises financial impacts to the P&C, allows us to further run down old stock, and takes seasonal changes into account. Older styles will no longer be available following the gradual transition.

FOOTWEAR

In accordance with the *Safe Working Policy*, the Department of Education has identified areas of its workplaces where appropriate footwear must be worn by staff, students and visitors to ensure their safety.

Areas where enclosed leather footwear (or other material confirmed by the manufacturer to be suitable, refer to Australian/NZ Standard 2210: *Safety Protective and Occupational Footwear*) is required are: Industrial Arts and trades workshop areas Science laboratories Canteen or Food Technology (Kitchen) areas. If students present for a class or activity with inappropriate footwear the student will be offered alternative educational activities until they are wearing appropriate footwear.

UNIFORM SHOP

The Parents & Citizens Association, SRC and staff support the wearing of school uniform. The Uniform Shop is organised by the P&C and operated by Sustainable School Wear. Its aims to benefit busy parents and students by providing a one-stop buying service, to save parents money by presenting goods below usual retail price, and to make a small profit to supplement the much needed school funds. The Uniform Shop is run by Sustainable School Wear in conjunction with the P&C to provide uniforms at reasonable prices.

All clothing items of the school uniform are available from the School Uniform Shop. The shop is located on the top floor of Block K (Mathematics and Visual Arts building) and is open on Tuesday mornings between 8.00am and 11.00am during school terms. Uniform items can be bought on the day or ordered via the school website.

Jewellery and Body Piercing – All Students

No differentiation is made between male and female students with respect to the wearing of jewellery or of body piercing.

The whole issue of enhancement to personal appearance using jewellery, body piercing and other adornments is a matter on which there is a huge range of public opinion. Rather than make definitive rules with regard to all aspects of these matters the School Council, P & C and school staff endorse the following guidelines.

Guidelines

Jewellery is not permitted to be worn at Sport, Industrial Arts, Physical Education, Science classes, or in any other class where the teacher believes a safety or hygiene issue exists.

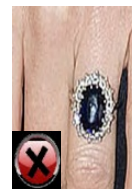
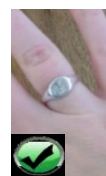
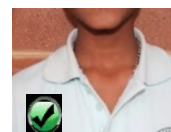
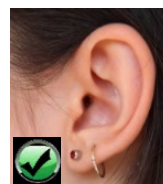
The wearing of jewellery, use of body piercing and jewellery used with body piercing, or the use of other adornments **must not detract from the wearing of school uniform** or be of such size or construction or be placed in such a manner as to **create a potential safety risk for either the wearer or others.**

Students may wear small unobtrusive items that do not detract from the wearing of school uniform or present a potential safety risk.

Large chunky or brightly coloured items are not permitted. (*Examples include: spikes, studs, large leather wristbands and chunky rings*)

The risk to safety resulting from body piercing and the use of jewellery will be determined based on the location of the piercing and the size and construction of the jewellery.

As these matters are so open to personal interpretation the School Council, the P & C Association and the school staff endorse the school Principal or nominee to be the final and sole judge in the interpreting of these guidelines.



P & C Association

The Hunters Hill High School P & C Association extends a warm welcome to all parents and invites them to its meetings. These are held at the school on the Monday of week 3 and 7 of each term, and they provide an opportunity for all parents and citizens to participate in its activities.

We are proud of our successes in providing amenities which are not financed by the Department of Education and Communities, and we gain pleasure from working together for the benefit of the children. We are always in need of support, so if you would like to make an entry in your diary - the Monday of week 3 and 7 each term- we would be pleased to see you

Student Representative Council (SRC)

The Student Representative Council involves students in many areas of school life. SRC members assume high profile leadership positions within our school community.

Students from each Year group are elected by their peers to represent them on the Council and, together with the Captains and Vice-Captains, work together in helping to formulate decisions, and to arrange activities, which aim to make our school an interesting and enjoyable place to learn. The SRC also initiates and supports many fundraising activities to benefit our school and others in the wider community.

The SRC meets weekly at lunchtime and operates under its own constitution. The constitution was devised and written by students on the Council.

Duke of Edinburgh

At Hunters Hill High School, the Duke of Edinburgh Award Scheme operates for students when they reach 14 years of age, generally Year 9.

The award involves four sections; Service, Skills, Physical Recreation and Expeditioning, which on satisfactory completion, leads to an award at either Bronze, Silver or Gold level.

High School over many years and we have a committed staff who encourage students through all aspects of this exciting and challenging program.

This is a program that develops a student's independence and skills. It is a program highly regarded by business and industry because it develops the leadership skills of those participating.



Do you live 2 kilometres or more from School?

Free bus transport to and from school each day is available for students who live a minimum distance from their school - to be eligible for a School Opal card to pupils must reside MORE than 2.0km straight line distance or 2.9km walking or further.

How to apply?

- ♦ Application is available online.



<https://apps.transport.nsw.gov.au/ssts/>

<https://www.opal.com.au/en/about-opal/opal-for-school-students/>

Student Safety arriving and departing School

Parents are requested not to drive into the school grounds to “drop off” or “pick up” their child if they have been driven to school.

For pickup it is preferred that you organise a location some distance from the entry to the school to help alleviate congestion or have your child wait inside the school grounds until you arrive for “pick-up”.

Hunters Hill High School Library

Hunters Hill High School Library is a multi-functional area that provides an environment that is conducive to 21st century learning. Our primary aim is to provide a quality service that attends to the needs of the school community.

Hours

8.30am to 3.10pm daily. Students are welcome to read, play chess or work quietly before school, most recesses and most lunch times.

Our collection

- Extensive Fiction Collection catering to all tastes
- Non-Fiction
- Graphic Novels
- Reference

Loans

Up to 8 books may be borrowed by junior students (4 fiction and 4 non-fiction). The loan period is 2 weeks.

Equipment

Students have access to a variety of resources including computers and printing.

Borrowing

Students use their Students ID to borrow library items.

Library Areas and Uses

Our library is primarily used for academic purposes. Students are provided with access to technology and collaborative work spaces. Games such as chess can be accessed during the breaks.

Year 12 Study Skills during the day

Students must sign in on the sheet near the front desk. Students are expected to be organised and have work to do.

Expectations

The library is a shared learning space, therefore it is expected that students follow the school's core values of respect, responsibility and active learning.

Devices including desktop computers and laptops are only to be used for academic purposes.

Library Staff

Dr Errington is happy to assist with any enquiries

Student Assessments

Assessment

Each course of study will have a series of assessment tasks. These will take a variety of forms including essays, topic tests, examinations, research tasks and practical class assessments.

At the completion of each task, students will receive a mark or grade for that task.

Method of Reporting

Reports will be available on a semester basis. There will also be a Parent Teacher Night.

Student Responsibilities

Task Submission

- Assessment tasks must be completed by the due date and time as stipulated by the Assessment Notification.
- The Assessment Notification and/or teacher will specify how the task is to be submitted, eg via Google Classroom, Microsoft Teams or a hard copy in class.
- Where a due date is given for a hand-in task, it is expected that the task will be submitted within the lesson of that subject.
- **Failure to complete a task by the required date will result in a mark of 0% awarded.**
- A genuine attempt at all tasks must be made and submitted to an acceptable standard.

Illness/Misadventure

- If there is cause for Illness/Misadventure, the student must download a Misadventure Form from the Hunters Hill High School website or see their teacher for a Misadventure Form.
- If a student is absent for an assessment, they must contact their teacher and the Head Teacher of the subject.

Plagiarism/Malpractice

- All work submitted must be the student's own original work.
- In the case of plagiarism/malpractice (eg copying of internet dumping), the student will be awarded zero.
- Students must follow examination procedures (this may include no devices, notes or looking at the work of others).
- Students adhere to the rules and protocols of formal examination.

Students should be aware that the Principal must certify that all courses of study have been satisfactorily studied, i.e. assignments, practical work, class essays, topic tests or research are completed.

Failure to complete all set work may place the student's completion of Stage 4 outcomes in jeopardy



Hunters Hill High School Bell Times 2022

Monday			Tuesday			Wednesday			Thursday			Friday		
Period 1	8:45am 9:50am	65 mins	SRE	8:45am 9:15 am	30 mins	Period 1	8:45am 9:48am	63 mins	Period 1	8:45am 9:50am	65 mins	Period 1	8:45am 9:50am	65 mins
Period 2	9:50am 10:55am	65 mins	Period 1	9:15am 10:10am	55 mins	Period 2	9:48am 10:51am	63 mins	Period 2	9:50am 10:55am	65 mins	Period 2	9:50am 10:55am	65 mins
Recess	10:55am 11:25am	30 mins	Period 2	10:10am 11:05am	55 mins	Recess	10:51am 11:21am	30 mins	Recess	10:55am 11:25am	30 mins	Recess	10:55am 11:25am	30 mins
Period 3	11:25am 12:30pm	65 mins	Recess	11:05am 11:25am	20 mins	UMatter mentoring	11:21am 11:46am	25 mins	Period 3	11:25am 12:30pm	65 mins	Period 3	11:25am 12:30pm	65 mins
						Period 3	11:46am 12:49pm	63 mins						
Period 4	12:30pm 1:35pm	65 mins	Period 3	11:25am 12:20am	55 mins	Lunch	12:49pm 1:19pm	30 mins	Period 4	12:30pm 1:35pm	65 mins	Period 4	12:30pm 1:35pm	65 mins
			Whole School & Sport Assembly	12:20am 12:40pm	20 mins									
Lunch	1:35pm 2:05pm	30 mins	Lunch	12:40pm 1:10pm	30 mins	Period 4 10,11,12 7,8,9	1:19pm 2:14pm 2:22pm	63 mins	Lunch	1:35pm 2:05pm	30 mins	Lunch	1:35pm 2:05pm	30 mins
Period 5	2:05pm 3:10pm	65 mins	SPORT	1:10pm 3:00pm	110 mins	After School Detention (room 201)	2:25pm 3:00pm	35 mins	Period 5	2:05pm 3:10pm	65 mins	Period 5	2:05pm 3:10pm	65 mins

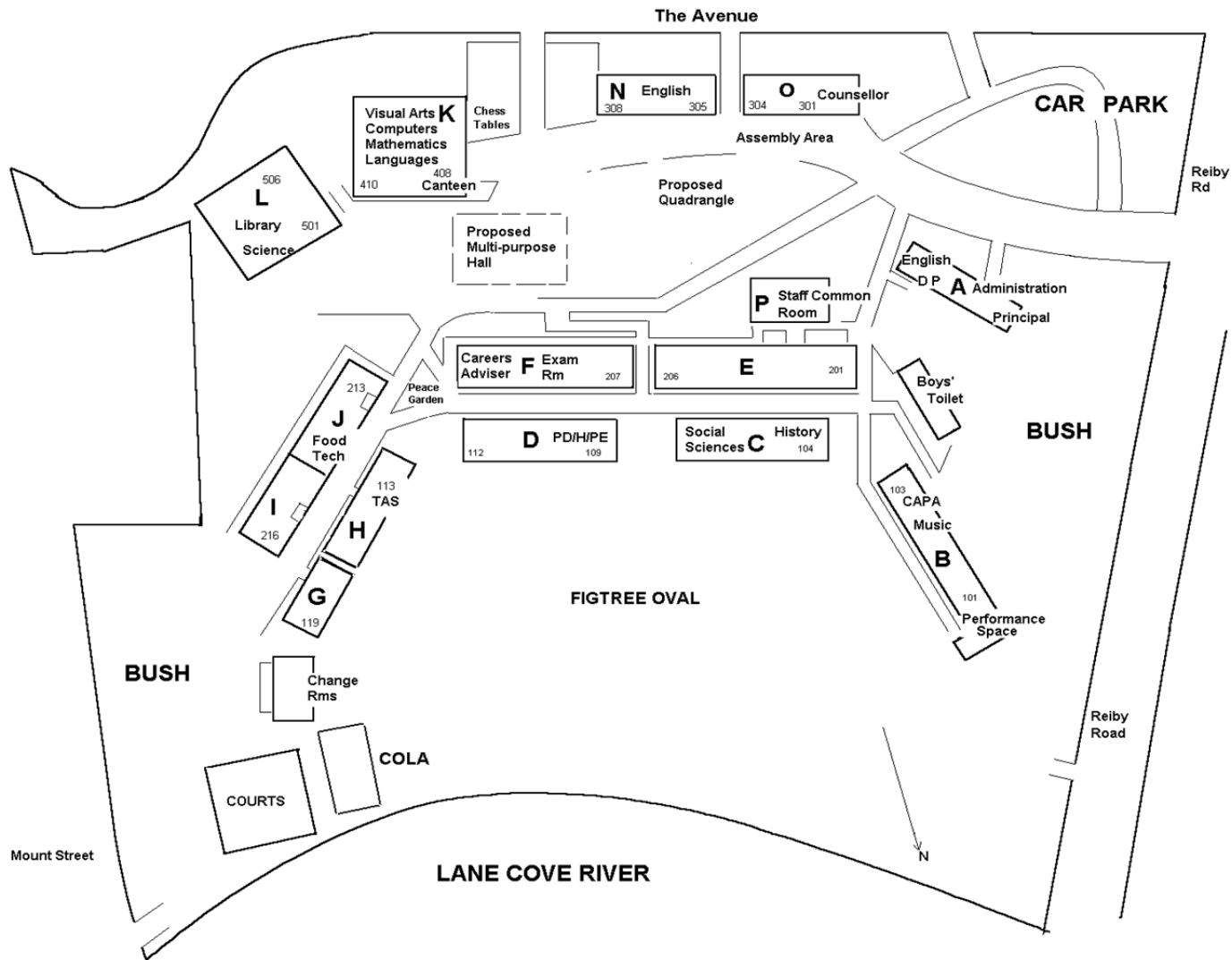
Each week students go to their allocated rooms for UMatter except when there is a Year Meeting.

Year Meetings: Years 11 & 12 (Weeks 1,4,7,10) **Years 9 & 10** (Weeks 2,5 8) **Years 7 & 8** (Weeks 3,6,9)

Note - SRE is optional for students on Tuesdays. Period 1 for all students begins at 9.15am. Supervision will be provided between 8.45am 9.15am
All students will be able to go home at the end of Period 4 on a Wednesday. Supervision will be provided between 2.22pm and 3pm.



MAP OF HUNTERS HILL HIGH SCHOOL



Index of Subjects	
Subjects	Page
English	31
Mathematics	32-33
Science	34
Human Society and it's Environment	
♦ Geography	35
♦ History	36
PDHPE	37
Creative and Performing Arts	
♦ Music	38
♦ Visual Arts	39
Technology and Applied Studies (TAS)	40
Languages	
♦ Chinese	41
♦ Spanish	42

English

English in Year 8 is both challenging and enjoyable. The Year 8 English program forms the consolidation of our Stage 4 program and aims to:

- build on and extend the skills gained in Year 7
- instil in our students a life-long love and involvement with all forms of literature
- enable all students to improve their competence and confidence in reading, writing, speaking, listening and viewing
- develop student skills in Information Communication and Technology as they apply to English

8	Topic	Assessment: Type, weighting status	Outcomes:
1	Imagery and the natural world	Essay- 20% Week 8, Term 1(S1)	EN4-1A, EN4-3B, EN4-5C
	Reporting Outcome:	Identifies and analyses how imagery shapes meaning, and constructs imagery to convey meaning in poetic texts.	
2	Genre: Speculative Fiction	Imaginative Task-15% Reflection- 5% Week 6, Term 2 (S1)	EN4-1A, EN4-7D, EN4-6C
	Reporting Outcome:	Engages with Speculative Fiction texts to create a narrative that expresses an understanding and interpretation of their broadening world	
3	Appropriation	Video Trailer and Pitch 20% Week 7, Term 3 (S2)	EN4-2A EN4-4B EN4-5C EN4-9E
	Reporting Outcome:	Uses a widening range of processes, skills, strategies and knowledge for responding to and composing texts in different media and technologies	
4	Australian Identity	Personal Essay- 20% Week 6, Term 4 (S2)	EN4-1A, EN4-5C, EN4-7D
	Reporting Outcome:	Analyses a range of text types to create a personal evaluation on notions of Australian identity	
5	Write now Journal	10%- Semester 1 Week 3, Term 2(S1) 10%- Semester 2 Week 3, Term 4 (S2)	EN4-2A EN41A, EN4-3B, EN4-5C, EN4-4B,EN4-9E
	Reporting Outcome:	Students utilise skills in reading and writing to create and respond to a variety of texts	

Mathematics

Course description

Mathematics is a reasoning and creative activity employing abstraction and generalisation to identify, describe and apply patterns and relationships. The symbolic nature of mathematics provides a powerful, precise and concise means of communication.

Mathematical ideas have evolved across all cultures over thousands of years and are constantly developing. Digital technologies facilitate this expansion of ideas, providing access to new tools for continuing mathematical exploration and invention. Mathematics is integral to scientific and technological advances in many fields of endeavour. In addition to its practical applications, the study of mathematics is a valuable pursuit in its own right, providing opportunities for originality, challenge and leisure.

Mathematics in Stage 4 provides students with knowledge, skills and understanding in Number and Algebra, Measurement and Geometry, and Statistics and Probability. It focuses on developing increasingly sophisticated and refined mathematical understanding, fluency, communication, logical reasoning, analytical thought and problem-solving skills. These capabilities enable students to respond to familiar and unfamiliar situations by employing strategies to make informed decisions and solve problems relevant to their further education and everyday lives.

Report Outcomes

Students will have:

- Developed knowledge, understanding and skills in **Number**
- Developed knowledge, understanding and skills in **Algebra**
- Developed knowledge, understanding and skills in **Measurement**
- Developed knowledge, understanding and skills in **Geometry**
- Developed knowledge, understanding and skills in **Statistics**



Assessment Schedule

Task	Timing	Weighting %
Assignment	Term 1, Week 9	20
Half-Yearly Examination	Term 2, Week 4	25
Assignment	Term 3, Week 6	20
Yearly Examination	Term 4, Week 4	25
Bookmarks (2.5% each Term)		10
Total Weighting %		100

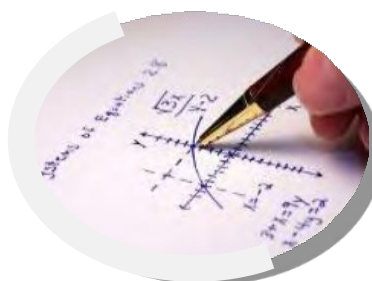
Program Summary

Term 1	Week 1	Week 2	Week 3	Week 4	Week 5	Week 6	Week 7	Week 8	Week 9	Week 10	Week 11
Topic	Pythagoras' Theorem		Algebra & Indices				Equations				Measur- ement
Unit Title	S4 Right-Angled Triangles		S4 Algebraic Techniques 1 (review), S4 Algebraic Techniques 2, S4 Indices				S4 Equations				S4 Area (review)
Outcomes	MA4-16MG		MA4-8NA, MA4-9NA				MA4-10NA				<i>see below</i>

Term 2	Week 1	Week 2	Week 3	Week 4	Week 5	Week 6	Week 7	Week 8	Week 9	Week 10
Topic	Measurement	Consolidation & Exam			Fractions, Decimals, Percentages & Finance			Geometry & Congruence		
Unit Title	S3 Volume and Capacity (review), S4 Volume				S4 Fractions, Decimals and Percentages (part), S4 Financial Mathematics			S4 Properties of Geometrical Figures 1 (review)		
Outcomes	MA3-11MG, MA4-14MG				MA4-5NA, MA4-6NA			MA4-17MG		

Term 3	Week 1	Week 2	Week 3	Week 4	Week 5	Week 6	Week 7	Week 8	Week 9	Week 10
Topic	Geometry & Congruence	Ratios & Rates			Linear Relationships & Number Plane			Data Analysis		
Unit Title	S4 Properties of Geometrical Figures 2	S4 Ratios and Rates			S4 Linear Relationships (part)			<i>see below</i>		
Outcomes	MA4-17MG	MA4-7NA			MA4-11NA			<i>see below</i>		

Term 4	Week 1	Week 2	Week 3	Week 4	Week 5	Week 6	Week 7	Week 8	Week 9	Week 10
Topic	Data Analysis	Consolidation & Exam			Data Analysis		Spreadsheets & Problem Solving			
Unit Title	S3 Data (review), S4 Data Collection and Representation				S4 Single Variable Data Analysis					
Outcomes	MA3-18SP, MA4-19SP, MA4-20SP				MA3-18SP, MA4-19SP, MA4-20SP					



Science

Subject outline:

Science provides an empirical way of answering interesting and important questions about the biological, physical and technological world. Scientific knowledge is contestable and is revised, refined and extended as new evidence arises or existing evidence is re-conceptualised. The study of Science is a collaborative, creative endeavour and has led to a dynamic body of knowledge organised as an interrelated set of models, theories, laws, systems, structures and interactions. It is through this body of knowledge that science provides explanations for a variety of phenomena and enables sense to be made of the natural world.

Term	Week 1	Week 2	Week 3	Week 4	Week 5	Week 6	Week 7	Week 8	Week 9	Week 10
1	From little things big things grow (Living World II) Cells, plant systems (combination of multicellular, investigations with plants, cells,)									Chemical world
Task									Topic test	
2	Chemical World II Elements, Mixtures, compounds, chemical changes, Combination of kitchen chemistry, separating mixtures						Body Systems (Living World III) a combination of liquid of life, and feeding			
Task					Portfolio					
3	Body Systems (a combination of liquid of life, and feeding)			Student Research Project		Energy (Physical world III) Energy (potential, kinetic), conduction, convection, energy transformations, contemporary issues and solutions to heat and energy usage.				
Task						Depth Study				
4	Energy	Unit 6-Off the Planet (Earth and Space II) Solar system, day night seasons, water cycle								
Task				Yearly Exam						

Report Outcomes:

- O1 – Demonstrates knowledge and understanding about scientific concepts.
- O2 – Plans, safely carries out investigations and processes data to draw conclusions about questions and problems.
- O3 – Uses appropriate strategies to produce plausible solutions to problems and communicates information using appropriate scientific language.
- O4 – Develops values, attitudes and skills to appreciate the importance that scientific inquiry can positively impact society.

	Topic test Term 1 Week 9	Portfolio of work Term 2 Week 5	Student research project Term 3 Week 6	Yearly examination Term 4 Week 4
Task weight	25%	25%	20%	30%
	Components			
Knowledge and Understanding (Outcome 1)	20%			20%
Working Scientifically (Outcome 2-4)	5%	25%	20%	10%

Geography

Students undertake geographical inquiry to build knowledge and understanding of people, places and environments through the collection, collation and analysis of primary data and secondary information. Students propose explanations for spatial distributions, patterns and trends and infer relationships. They propose solutions, and may take action to address contemporary geographical challenges and predict outcomes.

Course Overview

Water in the World (10 weeks)
Interconnections (10 Weeks)

Report Outcomes

- GE4.1 Locates and describes the diverse features and characteristics of a range of places and environments
- GE4.6 Explains differences in human wellbeing
- GE4.5 Discusses management of places and environments for their sustainability
- GE4.8 Communicates geographical information using a variety of strategies

ASSESSMENT OVERVIEW		
	ASSESSMENT WEIGHTING	DATE(S)
Skills Test		
In-class Geography skills test based on interpretation of stimulus material.	30%	Term 1, Week 6
Research Project		
Students complete a research project investigating climate and weather at the local scale. This knowledge is then applied to the impact that climatic factors have on individuals at a local level.	30%	Term 2, Week 5
Spelling and vocabulary quizzes		
Students demonstrate understanding of words and terms from a vocabulary lists for each topic.	20%	Term 1, Week 8 Term 2, Week 4
Reading Comprehension and Critical Thinking		
Students complete an in-class assessment of reading comprehension and critical thinking based on an assigned text.	20%	Term 2, Week 2

History

The Stage 4 curriculum provides a study of the nature of history and historical sources, both archaeological and written. Students investigate ancient history from the time of the earliest human communities to the end of the ancient period (approximately 60 000 BC – c. AD 650). It was a period defined by the development of cultural practices and organised societies, including The Vikings, Medieval Europe, Japan under the Shoguns and The Spanish Conquest of the Americas.

Course Overview

Topic 1: The Vikings (7 weeks)

Topic 2: Polynesian Expansion (6 weeks)

Topic 3: The Black Death (7 weeks)

Report Outcomes

HT 4-1 Describes the nature of history and archaeology and explains their contribution to an understanding of the past.

HT 4-2 Describes major periods of historical time and sequences events, people and societies from the past.

HT 4-8 Locates, selects and organises information from sources to develop an historical inquiry.

HT 4-9 Uses a range of historical terms and concepts when communicating an understanding of the past.

ASSESSMENT OVERVIEW		
	ASSESSMENT WEIGHTING	DATE(S)
Source Analysis Test		
Historical skills test based on source interpretation and analysis.	30%	Term 3, Week 5
Ancient Societies Research Project		
Students complete a research project investigating the major features of a Polynesian society focusing on the historical developments of Polynesian societies and Polynesian expansion throughout the Pacific.	30%	Term 4, Week 4
Spelling and vocabulary quizzes		
Students demonstrate understanding of words and terms from a vocabulary lists for each topic.	20%	Term 3, Week 6 Term 4, Week 4
Reading Comprehension and Critical Thinking		
Students complete an in-class assessment of reading comprehension based on an assigned text.	20%	Term 3, Week 10

PDHPE

Course Description

PDHPE develops students' capacity to enhance personal health and well-being. It promotes their enjoyment of and commitment to an active lifestyle and to achieve confidence and competence in a wide range of physical activities.

Through PDHPE students develop knowledge, understanding, skills values and attitudes that enable them to advocate lifelong health and physical activity.

Students participate and are assessed in range of sports and physical activities. The assessment of students' skills and movement competence will be mapped to against the NSW Physical Literacy Continuum (for more information visit: <https://education.nsw.gov.au/teaching-and-learning/curriculum/key-learning-areas/pdhpe/physical-literacy/physical-literacy-continuum>)

Report Outcomes (will be selected from the following for Semester 1 & 2)

A Student:

- PD4-1** examines and evaluates strategies to manage current and future challenges
- PD4-2** examines and demonstrates the role help-seeking strategies and behaviours play in supporting themselves and others
- PD4-3** investigates effective strategies to promote inclusivity, equality and respectful relationships
- PD4-4** refines, applies and transfers movement skills in a variety of dynamic physical activity contexts
- PD4-5** transfers and adapts solutions to complex movement challenges
- PD4-6** recognises how contextual factors influence attitudes and behaviours and proposes strategies to enhance health, safety, wellbeing and participation in physical activity
- PD4-7** investigates health practices, behaviours and resources to promote health, safety, wellbeing and physically active communities
- PD4-8** plans for and participates in activities that encourage health and a lifetime of physical activity
- PD4-9** demonstrates self-management skills to effectively manage complex situations
- PD4-10** applies and refines interpersonal skills to assist themselves and others to interact respectfully and promote inclusion in a variety of groups or contexts
- PD4-11** demonstrates how movement skills and concepts can be adapted and transferred to enhance and perform movement sequences

Program Summary

Students will:

- enhance their sense of self, improve their capacity to manage challenging circumstances and develop caring and respectful relationships
- move with confidence and competence, and contribute to the satisfying and skilled performance of others
- take actions to protect, promote and restore individual and community health
- participate in and promote enjoyable lifelong physical activity
- develop and apply the skills that enable them to adopt and promote healthy and active lifestyles.

Assessment Schedule

Assessment Components	Task 1	Task 2	Task 3	Task 4	
Date of Task	Term 1 Week 10	Ongoing through PE lessons Term 1/2	Term 3 Week 10	Ongoing through PE lessons Term 3/4	Weighting %
Type of Task	Take Home Task 1	Practical Movement Competencies	Take Home Task 2	Practical Movement Competencies	
Theory	25		25		
Practical		25		25	
Marks	25	25	25	25	100

Creative and Performance Arts

Music

The aim of year 8 Music is to provide students with the opportunity to continue developing their understanding of music notation and terminology whilst providing them with the opportunity to participate in music making and composing. Throughout the year students have the opportunity to play keyboards, guitars or further develop their skills for a specific instrument studied at home and experience performing and learning about current music trends. They will listen to a wide range of musical styles that led to the development of today's popular music genres.

Report Outcomes Semester 1	Report Outcomes Semester 2
4.3 performs music demonstrating solo and/or ensemble 4.5 notates compositions using traditional and/or non-traditional notation 4.10 identifies the use of technology in the music selected for study, appropriate to the musical context	4.4 demonstrates an understanding of musical concepts through exploring, experimenting, improvising, organising, arranging and composing 4.6 experiments with different forms of technology in the composition process 4.9 demonstrates musical literacy through the use of notation, terminology, and the reading and interpreting of scores used in the music selected for study

Program Summary

Topics of study include: Pop/Rock, Australian, Movie Music, Jazz, Keyboards, Ukulele, Singing, Guitars, and Ensembles

Assessment Schedule

Year 8 Music	Task 1	Task 2	Task 3	Task 4	Task 5	Task 6
Due Date	Term 1 During Class Week 9-10	Term 2 During Class Week 2-4	Term 2 Assessment Week TBA	Term 3 Week 9-10	Term 4 During Class Week 2-4	Term 3 Assessment Week TBA
	Composition 3	Performance 3	Listening Exam 3	Composition 4	Performance 4	Listening Exam 4
Task	Composition In Class Task over two periods	Performance In Class Task over three periods	Listening/ Musicology In Class Task one period	Composition In Class Task over two periods	Performance In Class Task over three periods	Listening/ Musicology In Class Task one period
Nature of Task	Students will write a 12 Bar Blues melody using the C major chords C, F, G	Perform from the list of pieces studied in class or own pieces as discussed with teacher	Listening/ Responding Writing. Two music excerpts from the topic. Identify, Describe. Explain the sounds using the elements of music	iPad composition using Garage Band. Composing for a silent film clip	Perform from the list of pieces studied in class or own pieces as discussed with teacher	Listening/ Responding Writing. Two music excerpts from the topic. Identify, Describe. Explain the sounds using the elements of music
Weight	17	17	16	16	17	17

Visual Arts

Visual arts places great value on the development of students' intellectual and practical autonomy, reflective action, critical judgement and understanding of art in artmaking and in critical and historical studies of art.

Visual arts plays an important role in the social, cultural and spiritual lives of students. It offers a wide range of opportunities for students to develop their own interests, to be self-motivated and active learners who can take responsibility for and continue their own learning in school and post-school settings.

Report Outcomes

Semester 1	Semester 2
4.5 investigates ways to develop meaning in their artworks	4.1 uses a range of strategies to explore different artmaking conventions and procedures to make artworks
4.6 selects different materials and techniques to make artworks	4.4 recognises and uses aspects of the world as a source of ideas, concepts and subject matter in the visual arts
4.7 explores aspects of practice in critical and historical interpretations of art	4.10 recognises that art criticism and art history construct meanings

Program Summary

Semester	1 (Term 1 & 2)	1 (Term 1)	2 (Term 3 & 4)	2 (Term 3)	2 (Term 4)
Task	2 and 3	1	5 and 6	4	
Topic	'Places & Spaces'				
Program Summary	Students develop a Body of Work titled 'Cultural Landscapes' based on the principles of design, watercolour perspective, & Aboriginal art. The concept of European versus Aboriginal approaches to their culture and artmaking. Extension work from class studies 'Principles of Design' Assignment. Harmony 'Robots' Variety 'Birds'	Students study artists related to their Body of Work and complete an examination a. Short answer based on terms & concepts b. Artist analysis c. Extended Response essay. Artist Case Studies:- Hiroshige Lin Onus, Turner, Tjakamarra	Students develop a Body of Work titled 'Dimensions' based on the principles of design and scratchboard architecture. The concept of viewpoints and vanishing points with the invention from the Renaissance period. Extension work from class studies 'Principles of Design' Assignment. Contrast 'Comic' Balance 'Room'	Students study artists related to their Body of Work and complete a case study a. Short answer based on terms & concepts b. Artist analysis c. Extended Response essay Artist Case Studies: Howard Arkley Jeffrey Smart-	End of year Non examinable project. 'Chillies Menu'. Students select from a variety of artwork activities and work to their individual level and

Assessment Schedule

Year 8 Visual Arts	Semester 1		Semester 2	
Task	1	2	3	4
Due Date	Term 1 Week 6 - 9	Term 2 Weeks 2 – 3	Term 3 During Class Week 4-10	Term 4 During Class
Nature of Task	Case Study Critical & Historical Studies	Body of Work	Case Study Critical & Historical Studies	Body of Work
Component of course	Art making & Art Critical & Historical Studies	Art making	Art making & Art Critical & Historical Studies-	Art making
Weight	20	30	20	30

Technology Mandatory

Course Description

Technology Mandatory engages students in design and production activities as they develop solutions to identified needs and opportunities. Through the practical application of knowledge and understanding they learn about Agriculture and Food Technologies, Digital Technologies, Engineered Systems and Material Technologies.

Classes will be broken into Stream 1, 2, 3 and 4.

Stream 1: Digital Technologies

Stream 2: Engineering Systems

Stream 3: Agriculture and Food Technologies

Stream 4: Materials Technology

Digital Technologies

Students develop knowledge and skills in the use of a general-purpose programming language to design, produce and evaluate an information system using a microcontroller. They document their skill development tasks in a design and production folio.

Engineered Systems

Students explore how force, motion and energy are used to design and produce a wind turbine. They investigate how force is used in simple machines to propel a turbine to its greatest speed. Extension activities allow students to build a different propellers, test, evaluate and make changes.

Agriculture and Food Technologies

Students learn about the dairy industry and the range of food products that can be manufactured from milk. Students have the opportunity to grow herbs and vegetables and use them in practical food preparation lessons. They develop skills to make informed choices when preparing nutritious foods.

Material Technologies (Timber)

Students will work with timber and develop manufacturing skills when constructing a timber treasure box. Students will develop knowledge and understanding of the characteristics and properties of timber through research, experimentation and practical investigation.

Reporting Outcomes

Students will have:

- **TE4-1DP** designs, communicates and evaluates innovative ideas and creative solutions to authentic problems or opportunities
- **TE4-2DP** plans and manages the production of designed solutions
- **TE4-3DP** selects and safely applies a broad range of tools, materials and processes in the production of quality projects
- **TE4-9MA** investigates how the characteristics and properties of tools, materials and processes affect their use in designed solutions

Assessment Schedule

Task	Timing	Weighting %
Portfolio	Term 2, Week 4 Term 4, Week 4	40 %
Practical Project	Term 2, Week 4 Term 4, Week 4	60 %
Total Weighting %		100

Chinese

Course Description

The study of Chinese enables students to communicate with others in Chinese, and to reflect on and understand the nature and role of language and culture in their own lives and the lives of others.

Report Outcomes

Semester 1

LCH4-4C applies a range of linguistic structures to compose texts in Chinese, using a range of formats for different audiences

LCH4-5U applies Chinese pronunciation and intonation patterns

LCH4-6U demonstrates understanding of key aspects of Chinese writing conventions

LCH4-9U identifies that language use reflects cultural ideas, values and beliefs

Semester 2

LCH4-1C uses Chinese to interact with others to exchange information, ideas and opinions, and make plans

LCH4-2C identifies main ideas in, and obtains information from texts

LCH4-3C organises and responds to information and ideas in texts for different audiences

LCH4-7U applies features of Chinese grammatical structures and sentence patterns to convey information and ideas

Program Summary

Through the study of Chinese, students will

- engage and interact with peers in collaborative activities that involve planning and making arrangements
- locate information and identify gist in a range of spoken, written and digital texts and respond to it in English or Chinese
- recognise and use features of the Chinese sound system, discriminating use of tones, rhythm and sound flow
- use familiar Hanzi (Chinese character), identifying how character structure, position and component sequences relate the form of a character to its particular sound and meaning
- recognise their own and others' ways of expressing identity, reflecting on the relationship between language, culture and identity

Assessment Schedule

Task number	Task 1	Task 2	Task 3	Task 4	
Nature of task	In class test	Personal profile	My Family	Role Play	
Timing of Task	Term 1, Week 6	Term 2, Week 6	Term 3, Week 7	Term 4, Week 5	
Components	Weighting %				
Listening	15		10		25
Reading	10		15		25
Speaking		15		10	25
Writing		10		15	25
Total %	25	25	25	25	100

Spanish

Course description

- Students develop the knowledge, understanding and skills necessary for effective communication in Spanish. They learn to interact, access and respond to information and compose texts.
- They develop an understanding of the language system including sound, writing, grammar and text structure.
- Students also develop intercultural understanding of the interrelationship between the Spanish language and Hispanic culture and consider how interaction shapes communication and identity.
- Students develop the skills to communicate in Spanish. They listen and respond to spoken language. They learn to read and respond to written texts in Spanish. Students establish and maintain communication in familiar situations using Spanish.
- Students explore the diverse ways in which meaning is conveyed by comparing and contrasting features of the Spanish language. They develop a capacity to interact with Hispanic people, their culture and their language.

REPORT OUTCOMES

Semester 1

LSP4-1C uses Spanish to interact with others to exchange information, ideas and opinions, and make plans

LSP4-5U applies Spanish pronunciation and intonation patterns

LSP4-3C identifies main ideas in, and obtains information from texts

Semester 2

LSP4-2C organises and responds to information and ideas in texts for different audiences

LSP4-6U applies features of Spanish grammatical structures and sentence patterns to convey information and ideas

LSP4-4C applies a range of linguistic structures to compose texts in Spanish, using a range of formats for different audiences

LSP4-7U identifies variations in linguistic and structural features of texts

Program summary

The Spanish course builds upon the students' existing understanding of the spoken and written word, and teaches them how to respond appropriately in a range of different scenarios and to different stimuli. The emphasis is on real communication in authentic situations, enhanced by information technologies. Students will also gain an awareness and appreciation of the diverse cultures of the Spanish-speaking world.

The four key skills of Listening, Reading, Writing and Speaking will be covered. Learning will be topic based and topics will include talking about oneself, personal relationships, school life and hobbies and sports

Topic	Task	Date	Weighting		Syllabus outcomes
My friends and I	I movie Conversation	T1 W9	20%	Speaking 10% Writing 10%	LSP4-1C LSP4-5U LSP4-6U
MY Family	Mid Year Examination	T2 W2	30%	Listening 15% Reading 15%	LSP4-3C LSP4-7U
School	ICT Task Coded Dialogue	T3 W8	20%	Writing 10% Speaking 10%	LSP4-4C LSP4-6U LSP4-8U
Free Time Activities	Yearly Examination	T4W3	30%	Reading 15% Listening 15%	LSP4-2C LSP4-7U

